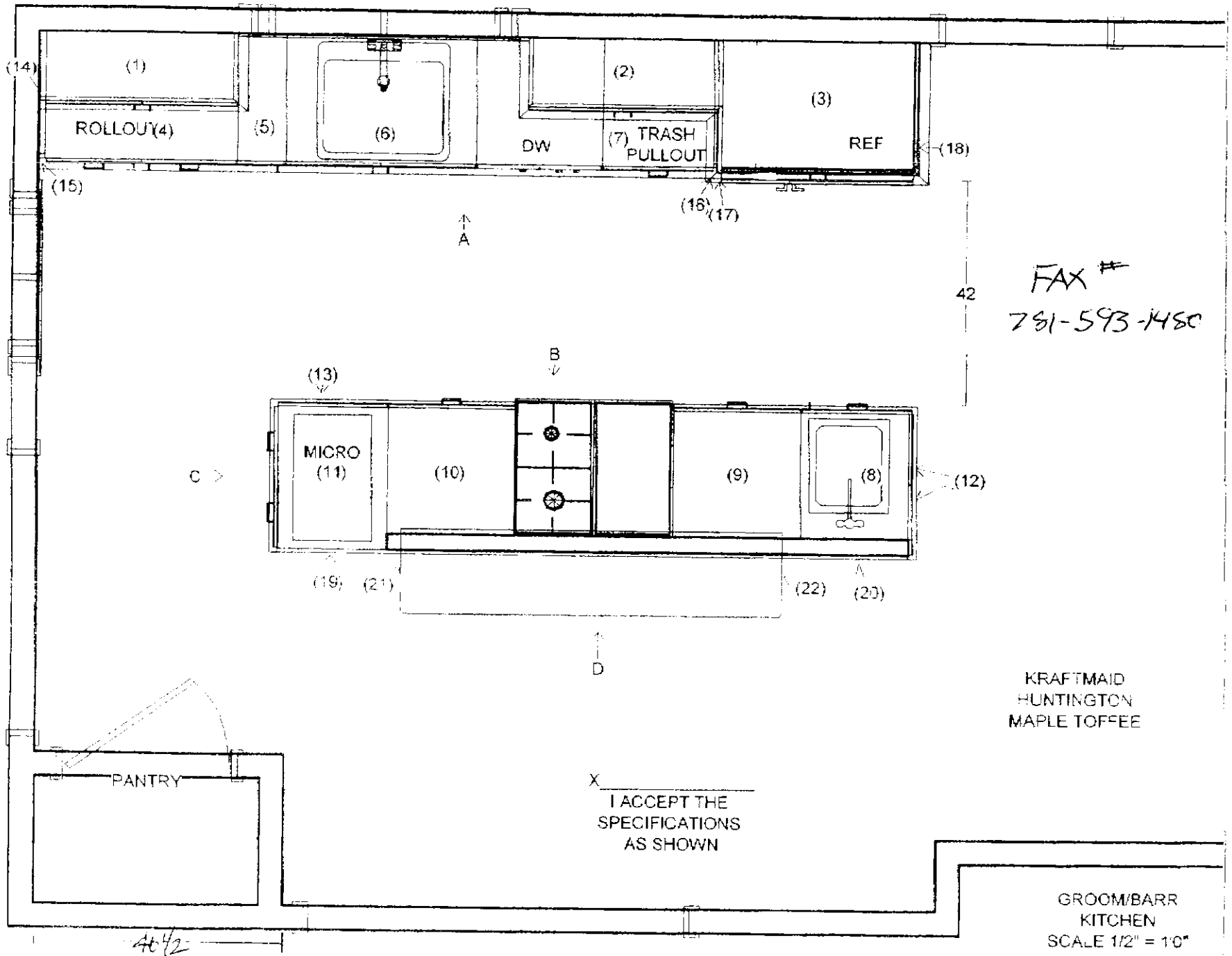
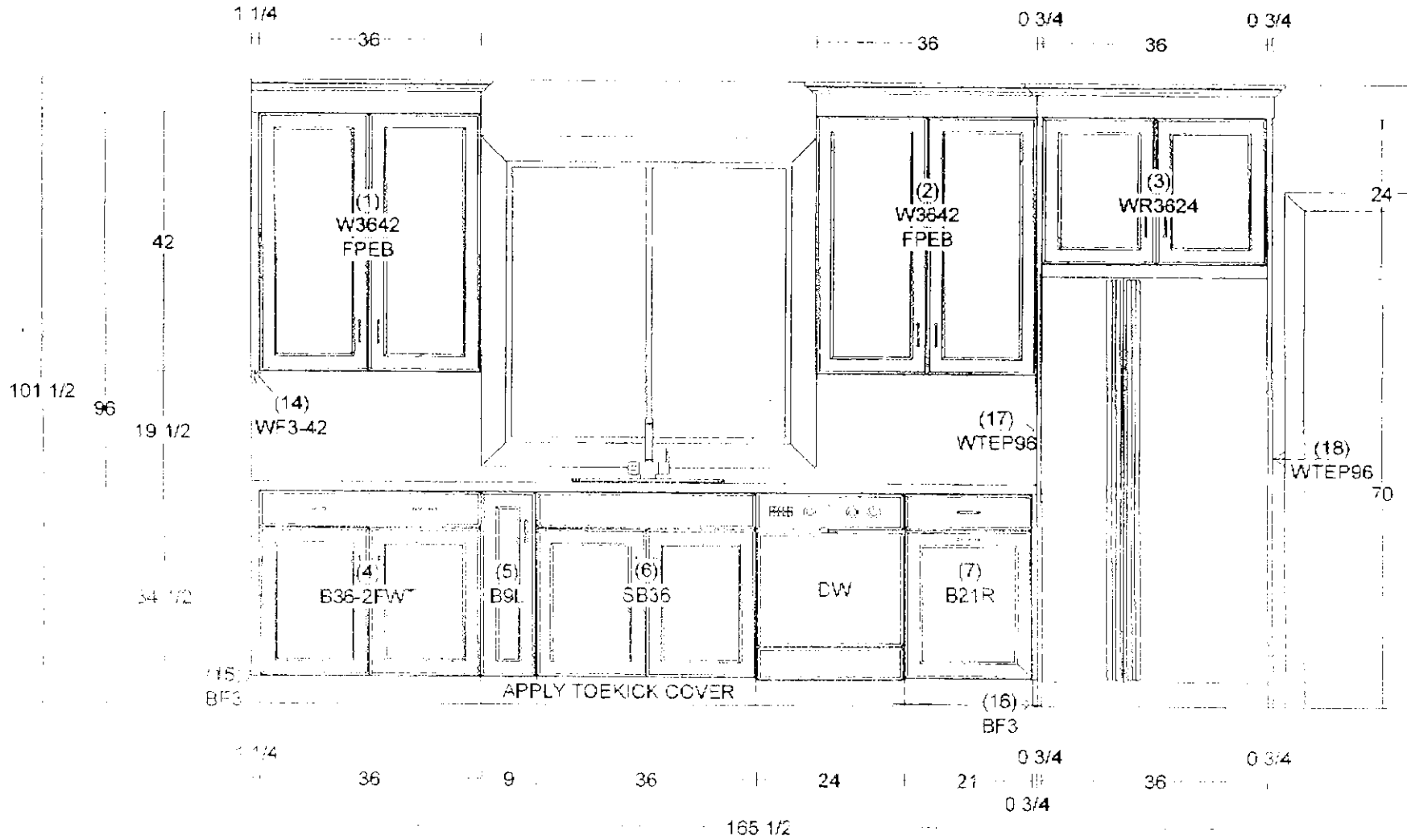


16' 3/8"



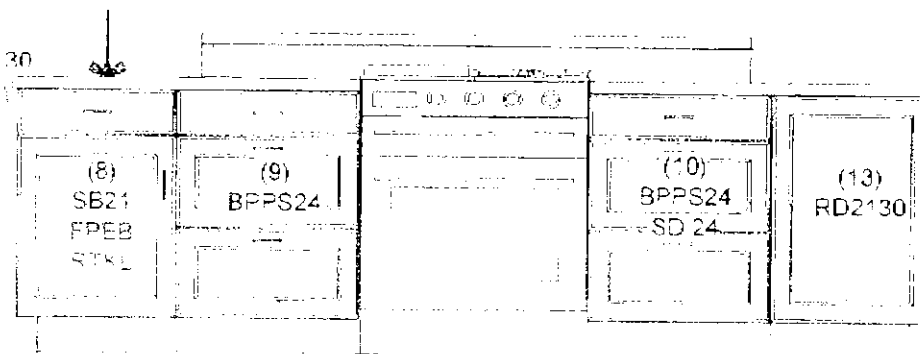
REFER TO MOLDING  
SKETCH FOR CROWN  
MOLDING AND LIGHT RAIL



GROOM/BARR  
ELEVATION "A"

(12)  
2 - RD13 1/2 x 30

24 1/2



(11)  
BMC272434  
RD21  
FPEB  
RTKL

21

24

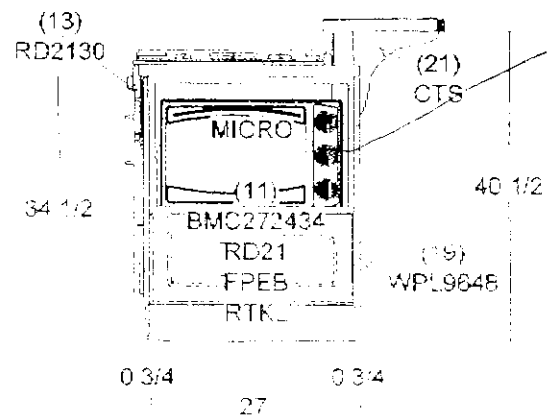
30

24

21

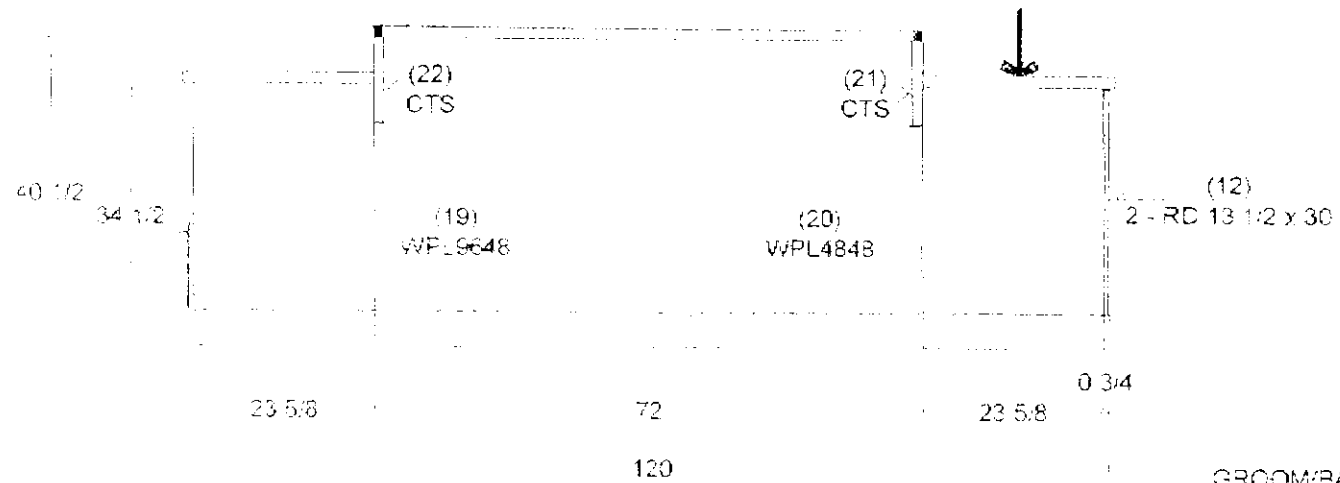
120

GROOM/BARR  
ELEVATION "B"  
SCALE 1/2" = 1'0"



24" x 18"  
2" Deep

GROOM/BARR  
 ELEVATION "C"  
 SCALE 1/2" = 1'0"



GROOM/BARR  
 ELEVATION "D"  
 SCALE  $\frac{1}{2}'' = 1'0''$

